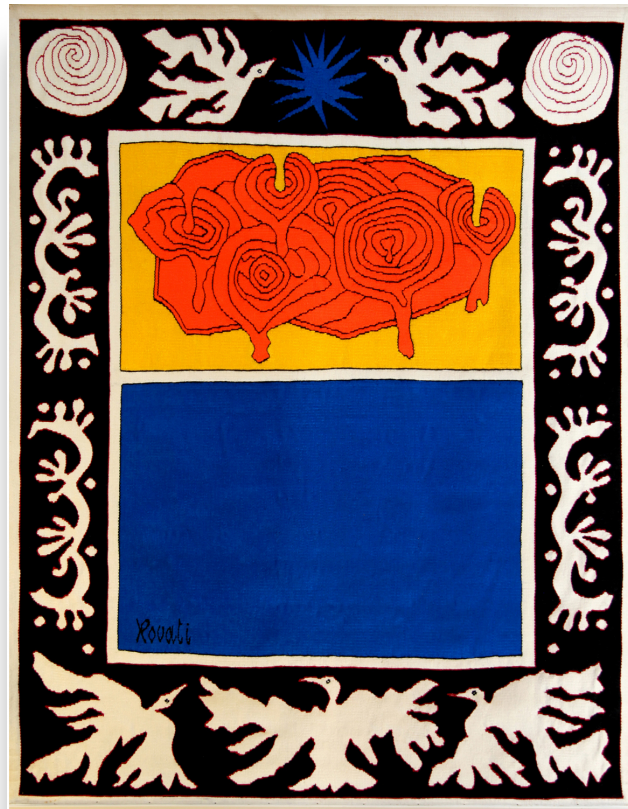


JOHN HIMMEL DECORATIVE ARTS



ROVATI

“La Stella Blu” signed unique tapestry

Silvano Clemente Rovati, born in Rome (1932-2016), began working in the early 60's experimenting with various painting techniques. Influenced by the artistic currents of the times, he embarked on a production of tapestries which he created with reference to certain masters of the national scene - Cagli, Burri and Afro- and international such as Matisse, to whom he paid direct homage in his work.

He developed tapestries with combinations of shapes and colors inspired by floral motifs that he called "cells"; amorphous patches of color are suspended on flat patches of color, conceptualized with geometric shapes that incorporate or juxtapose each other. The "cells" are characteristic of Rovati's work: they are whimsical, embodying both flowers and clouds that float and cling in compositions on the regular, colored face of a square or rectangle. Even if the "cell" is framed and enclosed in a field, it always remains free to move. Rovati also inserts soft, undulating elements into the compositions, referring to a liquid element. The space is empty, but the cell is alive.

Height: 156 cm/ 61.5"

Width: 118 cm/ 46.5"